



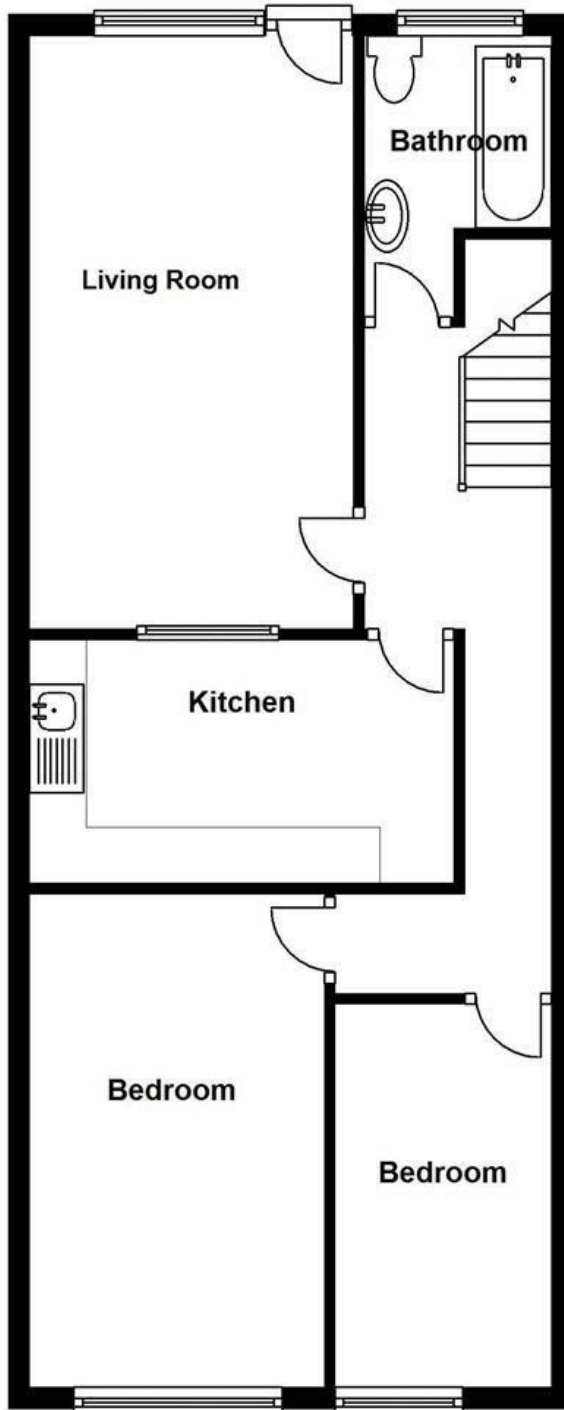
24A Station Road, Codsall, Wolverhampton, Staffordshire, WV8 1BX

First floor flat in particularly convenient location in the centre of the village with excellent range of amenities within short walking distance. Very attractively presented accommodation with comfortable modern standard of appointment. Spacious living room with door to external balcony terrace. Smart contemporary-style kitchen including integrated oven/hob/hood. Two bedrooms. Bathroom including shower. Electric radiator heating. Double glazed windows. Parking facilities adjacent. **AVAILABLE EARLY AUGUST - UNFURNISHED - SECURITY DEPOSIT £980 OF WHICH HOLDING DEPOSIT £195 - NO TENANT FEES **

£850 PCM

24a Station Road, Codsall

Approx. 60.4 sq. metres (649.7 sq. feet)



Energy Efficiency Rating		Current	Potential
<i>Very energy efficient - lower running costs</i>			
(92 plus) A			
(81-91) B			
(69-80) C			
(55-68) D			65
(39-54) E	47		
(21-38) F			
(1-20) G			
<i>Not energy efficient - higher running costs</i>			
England & Wales	EU Directive 2002/91/EC		